



Delicious Food





The DROSED Group is one of the key players in the Polish poultry product market, joining the LDC Group, a French poultry producer and an European leader of the sector, in 2000.

The entire Group employs around 5200 people and produces approximately 233,000 tons of poultry products per year. Group is made up of the following Companies: **The DROSED Group is made up of the following companies: Droseed S.A., Roldrob S. A, Sedar S.A., Drop S.A., Indykpol S.A., Konspol, NaturAgra and Droseed Surowiec.**

The company offers not only standard raw poultry in the form of broiler chicken meat but also sells premium guinea fowl as well as Corn-fed Chicken, Certified Polish Chicken, “Zagrodowy” slow-growing Chicken, goose, Pekin duck, BL 1 star, guinea fowl and turkey.

We are a well-known and valued producer of meats – pâtés, hot-dogs and regular sausages, cold meats, smoked products, canned meats and jellies. Conforming to the current market trends, we put particular emphasis on the development of our convenience offer – i.e. ready-to-eat breaded and roasted

poultry products. Obtaining such a wide portfolio was possible owing to one of the most modern industrial parks in Poland.

Moreover, the group works on securing its raw material base in a complex manner: producing and purchasing feedstuffs, chicken hatching and breeding contracting. We introduce new poultry genetic lines, ensuring good breeding practices and veterinarian-advised safety measures.

The DROSED Group constantly endeavours to provide products of the highest quality to its customers. Thanks to skilfully uniting good Polish traditions with the new production methods, the Group has earned trust both in the country and abroad. DROSED products may be found both in modern, traditional distribution, also in restaurants, not only in Poland but in other EU countries, Asia and Africa as well. The technologies used by the company have been recognised by the world’s most important certification bodies for meeting the highest standards. This fact is proved by the certificates obtained by the DROSED Group.







**88** employees  
Headquartes: Tomaszów Maz.



**779** employees  
**53,9 thousand tons** per year  
Production plant: Siedlce  
Logistic platforms: Toruń, Zabrze

PL  
14260501  
WE



**393** employees  
**18,2 thousand tons** per year  
Production plant: Międzyrzec Podl.

PL  
06013903  
WE



**454** employees  
**18,2 thousand tons** per year  
Production plant: Ostrzeszów, Kępno

PL  
30083901  
WE

PL  
30184101  
WE



**1377** employees  
**50,0 thousand tons** per year  
Production plant: Tomaszów Maz., Międzyrzec Podl.

PL  
10160501  
WE



**1363** employees  
Headquartes: Olsztyn, Warszawa  
Production plant: Olsztyn, Olsztynek, Lublin, Toruń, Frednowy

PL  
28620501  
WE



**568** employees  
Production plant: Nowy Sącz

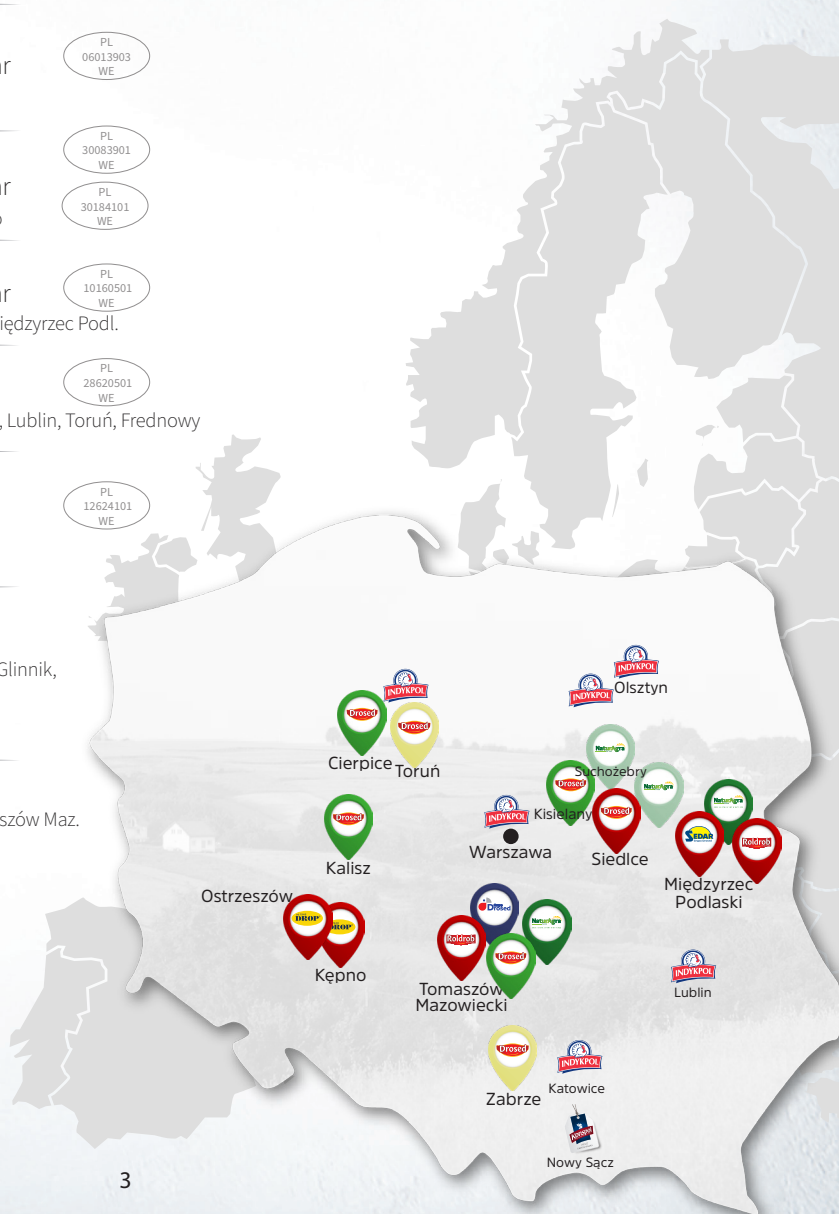
PL  
12624101  
WE



**181** employees  
Pasze (feed): Siedlce, Suchożebry  
Drób szlachetny (hatcheries): Nowy Glinnik,  
Międzyrzec Podl.  
Wylęgarnie (chicken hatching):  
Kalisz, Cierpice, Kisielany



**42** employees  
Headquarters of raw material: Tomaszów Maz.





**PREMIUM  
CHICKEN**



**PEKIN  
DUCK**



**STANDARD  
CHICKEN**



**OAT  
GOOSE**



**GUINEA FOWL**

**POULTRY  
SAUSAGES**



**TURKEY**



**PROCESSED FOOD**



**CANNED POULTRY  
MEATS**



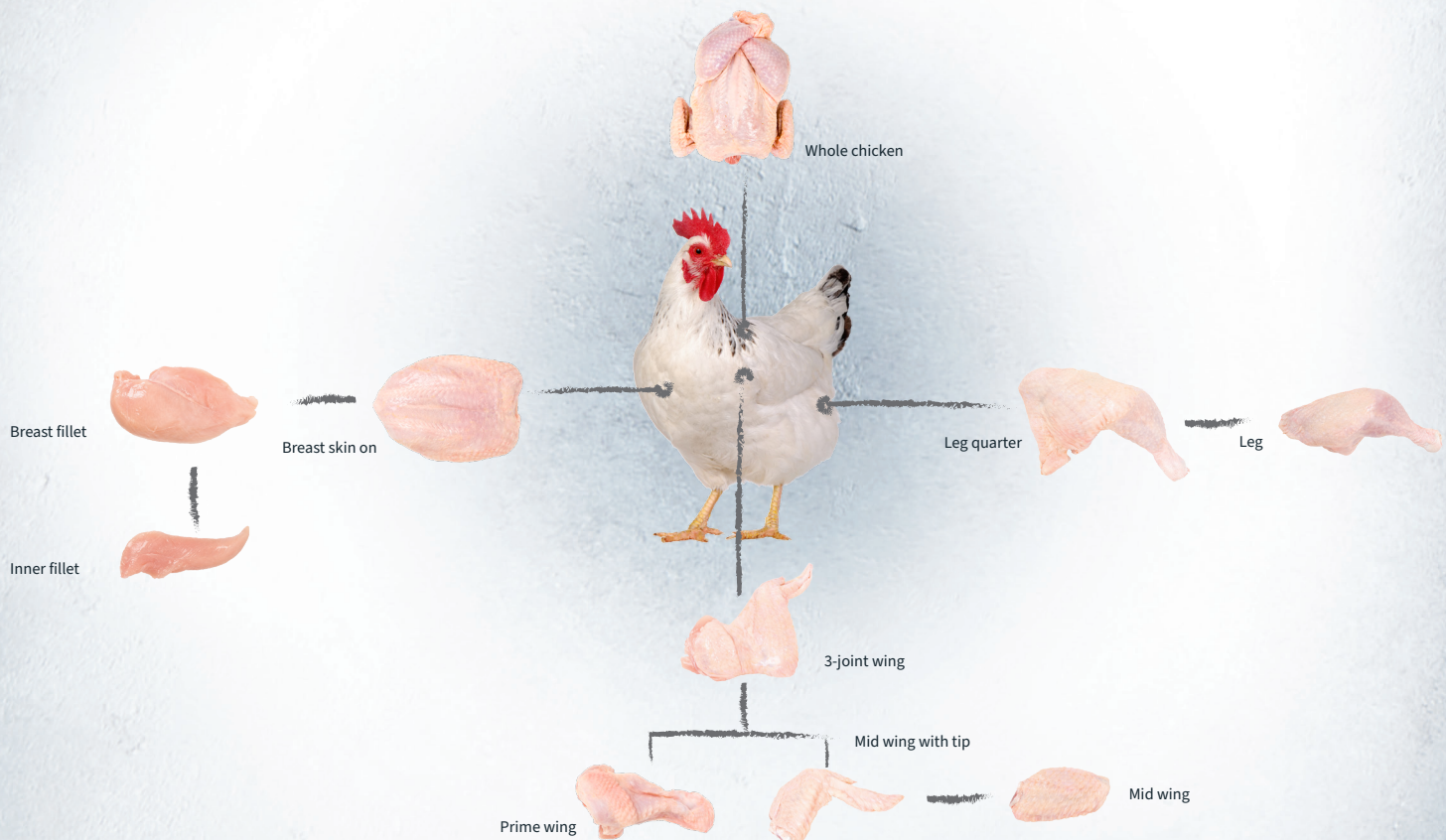
**Droshed**  
wide offer



# STANDARD BROILER CHICKEN

Chicken is the base of many cuisines around the world – chicken meals are willingly served and prepared in many ways. The meat is quick to prepare and equally delicious with any additive. It has perfect flavour qualities and a very tender structure. It is characterised by its high protein content and low fat and cholesterol.

Our broiler chickens are raised for approx. 40 days under the direct supervision of Drosed Surowiec. We offer both whole chickens and single chicken elements (fillet, quarter, leg, thigh, drumstick, wings, portions) or offals (liver, gizzards, heart), both fresh and frozen, available in any form of packaging: a tray, a MAP, a bag, or lose. Raised in the henhouses of reliable DROSED Group contractors.





# CORN-FED CHICKEN

The Corn-fed chicken is fed with a plant-based and mineral-based maize-based feed with the addition of other grains. Thanks to this, the meat has a distinctive, slightly golden color and a unique, slightly sweet taste after preparation. Corn is the perfect choice for children's dishes or sweet dishes. Especially recommended for broth - a beautiful yellow color that encourages consumption. The features of the product and the method of breeding and feeding are confirmed by an additional certificate of an independent Polish unit of the AgroEko Quality Center. Corn-fed chicken is available whole and in elements packed in a stretch tray, map or in bulk.



# STUFFE II CHICKEN AND QS CHICKEN

The Stuffe II chicken and QS are kept in selected poultry houses in accordance to all high quality standards. It is fed with the plant on later grains of cereals, minerals and vitamins, from the herbal line. Thanks to this, it is resistant to all diseases. Chicken welfare is at a high, above-standard level. It has more space in the hen house and has been provided pecking and jumping facilities. For a completely safety product is certified from feeding, breeding and producing. Product features, the method of breeding and feeding, as well as high welfare, is confirmed independently by external company. The chicken is available in its entirety and in elements packed in a map: fillet, quarter, wings.







## “ZAGRODOWY” CHICKEN

The “Zagrodowy” Chicken is a special, slow-growing breed, derived from the generic countryside hen. The “Zagrodowy” Chicken’s growth time is 50% longer than a regular chicken and takes at least 56 days. Owing to this, the chicken grows and develops in a natural manner. It is raised with care on small, family-run farms, using methods close to the traditional ones. It has all-year-round access to a spacious, open-air enclosure, and has plenty of space to move around inside its henhouse. It is fed using a natural, GMO-free feed (containing mainly cereals and sunflower) with the addition of the necessary vitamins and minerals. The feed is produced under the supervision of DROSED Group specialists. We select the farms for raising our “Zagrodowy” Chicken very carefully. The entire raising process is strictly supervised by zootechnical and veterinarian services.





# GUINEA FOWL

We raise our guinea fowl on carefully selected family farms in nearly-natural conditions. The bird is raised for an entire 77 days, using feeds made of cereals such as wheat and corn. The entire growth period is strictly monitored by zootechnical and veterinarian services.



# OAT GOOSE

We are one of the leading producers of oat goose meat in Poland and Europe. Goose is appreciated in nearly all European markets. In recent years, this familiar product has been enjoying a rise in popularity. We offer the full assortment of goose meats: carcasses, frozen elements and offals, available chilled during the season.







## PEKIN DUCK

The Pekin duck is the most popular duck breed in Poland. It is derived from the mallard and is a species raised for its meat.

The DROSED Group offers carcasses, elements and offals in chilled and frozen variants. Roasted, apple-stuffed Pekin duck has many fans in Poland and Europe alike.





# STEAMED PRODUCTS

---







**Chicken breast fillet**



**Inner fillet**



**Innerfillets and Fillet cuts**



**Dices**



**Strips**



**Slices**



**Leg meat dices**



**Leg meat strips**



# ROASTED PRODUCTS

---







**Breast fillet**



**Grill marked fillet**



**Cuts**



**Dices**



**Strips**



**Slices**



**Diced leg meat**



# ROASTED PRODUCTS WITH SPICES

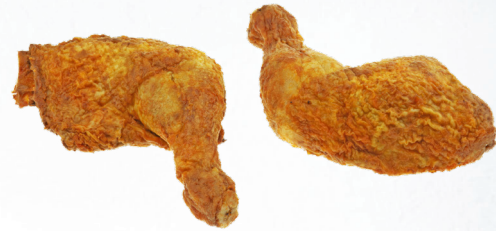
---







**Wings**



**Legs**



**Inner fillet with herbs**



**Sliced chicken breast meat in spices**



**Diced chicken breast meat in herbs**



**Chicken strips in spices**



**Chicken kebab**



# BREADED AND BATTERED PRODUCTS

---

WHOLEMUSCLE/ FORMED







Inner fillet



Wings



Chunks



Breaded nuggets



Breast fillet mild



Nuggets in tempura



Crispy burger



Formed strips



# DELICATESSEN, SMOKED PRODUCTS AND SOUS VIDE

---







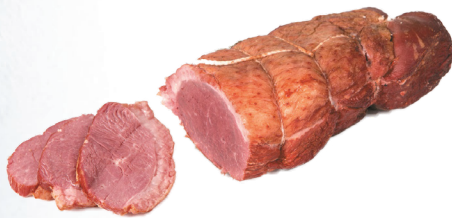
Smoked breast fillet



Smoked chicken leg quarter



Half chicken



Smoked goose breast



Smoked duck breast



Half duck



Goose and duck Sous Vide products



# SAUSAGES AND HOT DOGS

---







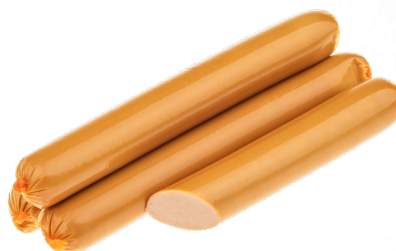
**Cocktail sausages**



**Grill marked sausages**



**Hot dogs 187 – 190 mm**



**Smoked sausages 160 – 163 mm**



**Export sausages 340 g VAC frozen**



# RETAIL READY-TO-SERVE OFFER

TYPES OF PACKAGING
PET/PE trays from 200 g to 500 g, flow pack printed & transparent foil bags from min 300 g, optional retail boxes
THERMAL CONDITIONS
Frozen, IQF and chilled

## EXAMPLES OF BREADED CHICKEN PRODUCTS



## EXAMPLES OF ROASTED CHICKEN PRODUCTS



## EXAMPLES OF FROZEN PRODUCTS







DROSED HOLDING S.A.  
ul. Warszawska 168/172  
97-200 Tomaszów Mazowiecki

email: [info\\_export@drosed.com.pl](mailto:info_export@drosed.com.pl)





2025